

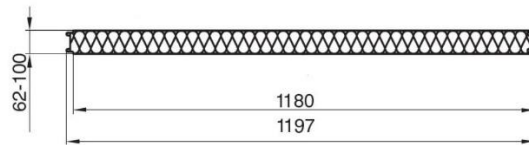
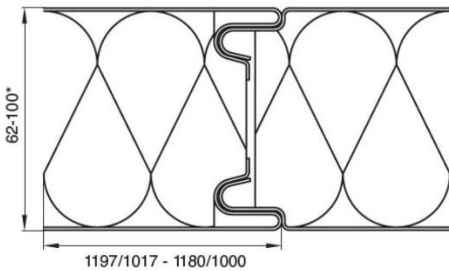
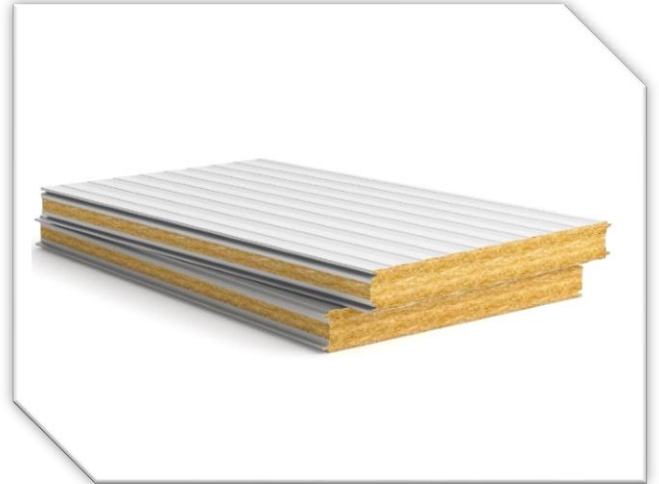
# WALL PANEL BASALT PLUS

Wall steel sandwich panel with basalt rock wool insulation with standard fasteners



## Properties:

- High density basalt rock wool core provides excellent thermal insulation for buildings
- Non-flammable. Panels BASALT+ can be used in projects which require above-standard fire protection ratings. High quality panels BASALT+ meet to EI 180 fire standard resistance according to BS EN 13501-2
- Precise standard fasteners provide neat juncture and prevent heat loss.
- Outer polymer coating guarantee long lasting protection of metal and impeccable building exterior



## Description:

Considering external perspective there are wall sandwich panels with smooth or specialized surface.

Thickness of the sandwich panels depends on the main technical and thermotechnical requirements of the building. That is why such criteria as robustness, thermotechnical characteristics and fire-resistance are considered for the use of this type of the sandwich metal sheets. These properties are crucial to ensure long-term service and efficiency. Furthermore, solid, though simple, lock helps to prevent permeation of moist air or steam within.

Mineral-wool insulated panels are a well-known choice of material for business building construction due to a variety of their advantages

Here is a short list of the aspects that should be considered:

- it's aesthetic material
- energy efficiency
- quick installation at large areas
- exceptional robustness of sandwich panels with mineral-wool core which leads to long-term durability and service.
- full safety determined by fire-resisting properties
- great thermal characteristics due to superior high-density insulation

## What are Actual Benefits of the Sandwich Panels with Mineral-Wool Core?

In the brief list below, we highlighted advantages of the mineral-wool core sandwich panels which actually cause their great popularity:

- Weight (These metal sandwich sheets allow you to reduce cost for foundation work since weighing is shortened by several times. Moreover, you can save on delivery and loading of the material which makes their price even more worth).
- Construction work is simple as well as it doesn't take much time.
- There is no need of any extra decorations after construction as sandwich panels are good-looking.
- Quality and safety certificates confirm that the material may be applied in the food industry or in medical institutions.
- Last and not the least is affordable price. Compared to other typical building materials, insulated sandwich panels are cheaper for the customers. Furthermore, the speed of construction work is 4-5 times higher.

## Applications:

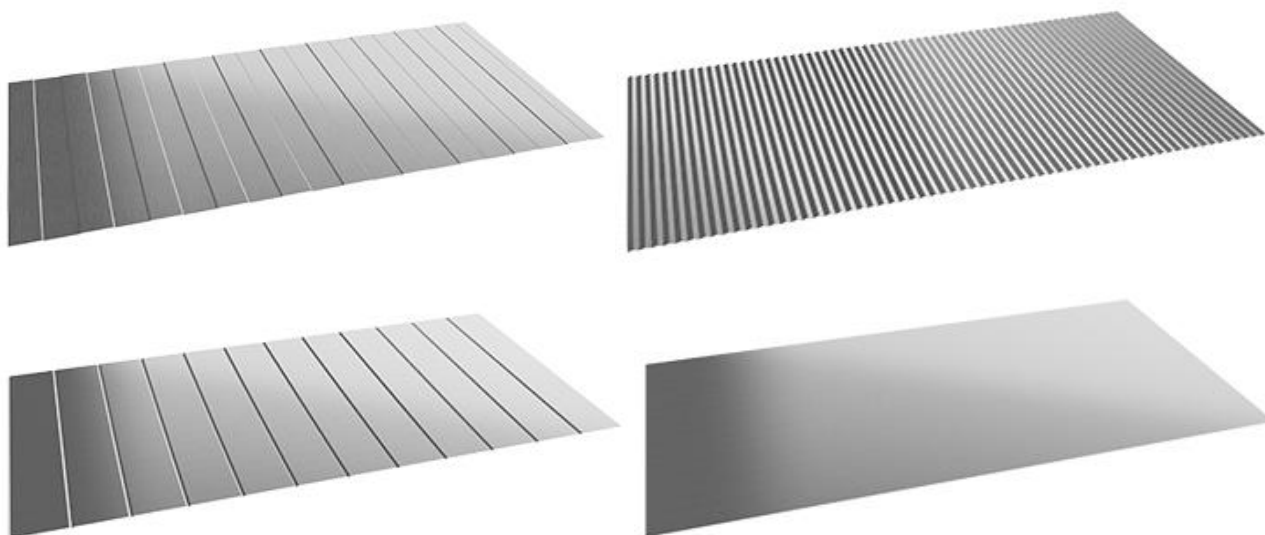
High fire-resistant panels BASALT PLUS can be exploited to construct widest range of buildings

- shopping centers
- industrial buildings
- warehouse complexes
- transport infrastructure facilities

## Specifications:

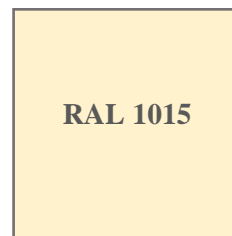
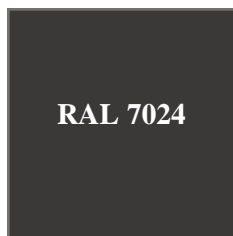
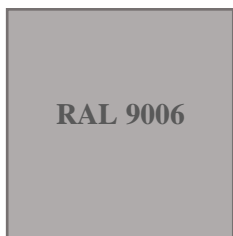
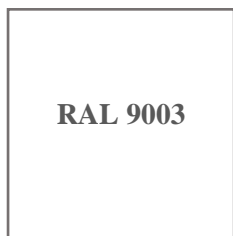
Core thickness [mm]	62	80	100	120	140	150	160	190	200	240
Core	Rigid mineral wool (nominal apparent density: 110 kg/m <sup>3</sup> )									
Effective width [mm]	1000, 1180									
Panel length [mm]	2000 to 12 000									
Cladding thickness [mm]	0.4 / 0.5 / 0.6 / 0.7									
Coat	PE/PEMA, PVDF, FOOD SAFE, PURAL®FARM, PURAL®									
Weight [kg/m <sup>2</sup> ]	14,64	16,51	18,71	20,91	23,11	24,21	25,31	28,61	29,71	34,11
External fire performance	Fire-resisting									
Fire resistance	EI30 / E45		E150 / I90			EI 180				

## Profiling:



## Color options:

The vast range of TPK wall and roof sandwich panels creates great opportunities for design. Metal sandwich panels from TPK amaze with the color palette that include popular shades as well as customer-oriented unique coverings of the metals. TPK finds quality a main priority that is why both roof and wall sandwich panels are made of prime thin polymer-coated steel sheet.



## References:

